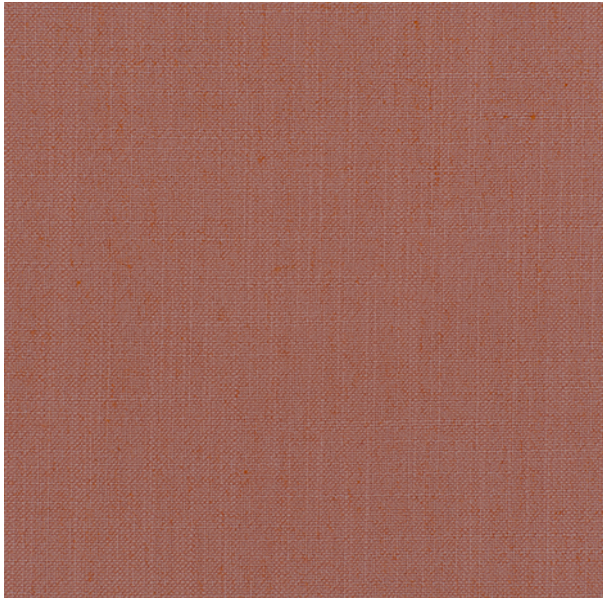


Pattern: **Le Bec Fin**
Color: **Paloma**

Somato



Specifications

SKU Number	1011-0912
Application	Upholstery, Indoor
Content	92% Polyester 8% Linen
Backing	SBR Backing
Finish	PFAS-Free Stain Resistant Finish
Weight	19oz/lyd
Width	54"
Fabric Shown	Up the Roll
Repeat	N/A
Country of Origin	China
Cleaning Code	WS
Product Notes	Prop 65 Compliant PFAS-Free California AB-2998 Compliant

Performance Characteristics

ACT[®] Registered Certification Marks 

Abrasion
ASTM D4157 100,000 Double Rubs

Pilling
ASTM D3511 Class 4

Seam Slippage
ASTM D4034, 25 lbs Warp: 106.9lbs / Weft: 84.2lbs

Break Strength
ASTM D5034 Warp: 463lbs / Weft: 267lbs

Wet Crocking
AATCC 8 Grade 5

Dry Crocking
AATCC 8 Grade 5

Color Fastness to Light
AATCC 16 Grade 4

Flammability
Cal TB 117 2013
NFPA 260
UFAC Class 1

